

BARTOLI

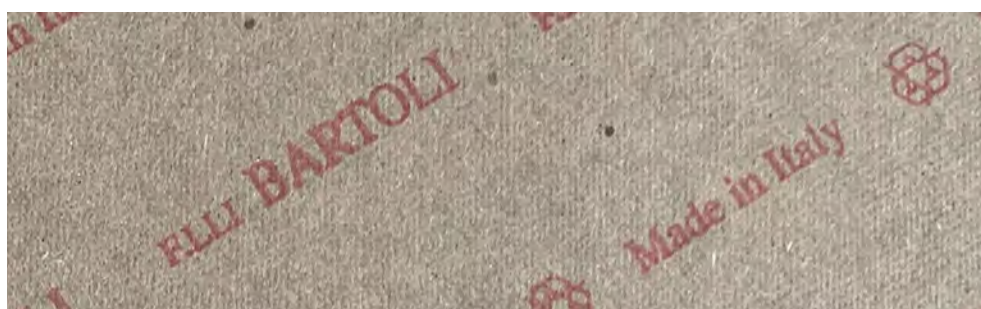


BTO Standard Quality

BTO cardboard has been refined to be a very competitive item in the international market by offering good performances such as lightness, softness and workability. Bartoli cardboard by its very nature has a low environmental impact, using recycled raw materials. In BTO, lower impact is also achieved by the careful reduction of chemicals.

DESCRIPTION

IMAGE
SCALE 1:1



COLOR	PRINT	THICKNESS	MASTER SHEET	STANDARD SIZES
brown	red	1,3 - 3,0 mm	3300 x 4800 mm	sheets 1060 x 1580 mm - LG sheets 1070 x 1570 mm - LG

FEATURES



CONNOTATIONS



CERTIFICATIONS

MANUFACTURING PLANT LUCCA - 100% MADE IN ITALY



PRODUCT INFO SHEET 1/3
BTO Standard Quality
06/2023



SHEET SIZE mm	THICKNESS mm	GR/CM ²	KG/SH *	SH x PL
1060 x 1580	1,3	1,0	2,17	670
1060 x 1580	1,5	1,0	2,51	620
1060 x 1580	1,8	1,0	3,01	520
1060 x 1580	2,0	1,0	3,35	460
1060 x 1580	2,2	1,0	3,68	420
1070 x 1570	2,4	1,0	4,02	390
1070 x 1570	2,5	1,0	4,20	370
1070 x 1570	2,8	1,0	4,70	330
1070 x 1570	3,0	1,0	5,04	310

* Theoretical weights

TECHNICAL DATA

Possibility to offer on demand specific sheet sizes, thicknesses, strips and sheets-roughing. The technical product values are reference values and may be subject to modifications. Each value is subject to minimum tolerances due to the use of recycled raw materials.

NOTES

TEST TM11	NAILING RESISTANCE	★ ★ ★ ★ ★
TEST TM80	DELAMINATION	★ ★ ★ ★ ★
TEST TM2	LONGITUDINAL/TRANSVERSAL TRACTION	★ ★ ★ ★ ★
TEST TM BAR01	RIGIDITY	★ ★ ★ ★ ★
TEST TM112	FATIGUE RESISTANCE	★ ★ ★ ★ ★

MECHANICAL TEST

TESTED BY





"Our environmental policy, which began many years ago, has always been oriented toward a scientific approach, never ideological, making use only of well known certifications issued by qualified and internationally accredited institutes, in compliance to the regulations and norms of over 80 countries where Bartoli company operates and private international brand requirements."

APPLICATION



100% RECYCLED

COMPOSITION



Recycled raw materials are carefully selected and controlled by the qualified supply chains. We use high performances pulp which pass both mechanical and chemical tests.



TAKE BACK. By this project we recover "insole-factory cuttings" directly from the footwear supply chain. The "insole-factory cuttings" are collected and returned to our company to be re-used in our production process. This further increases the circularity rate and reduces waste generation.



In cooperation with Intertek laboratories, for the chemical monitoring by constant tests on our raw materials and products in compliance with international regulations. In addition, the most restrictive limits of luxury brands become our benchmark limits.



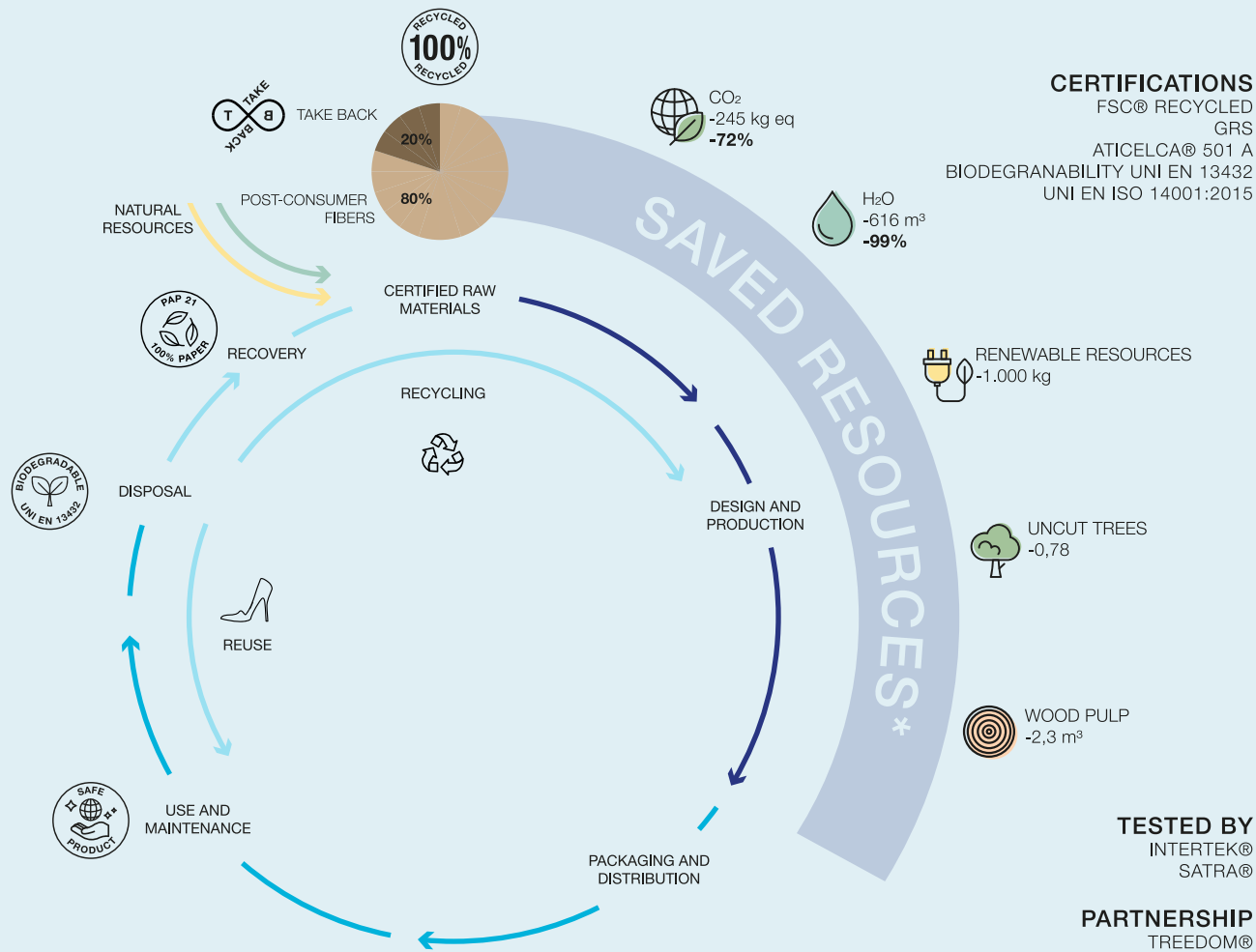
Sign up to our newsletter
to get updates on our products.
FRAME HERE








LIFE CYCLE THINKING



BTO Standard Quality



<p>1000 PAIR OF SHOES MADE FROM BTO 3mm**</p> 	<p>SAVED RESOURCES</p>	 CO ₂ -19 kg eq	 H ₂ O -48 m ³	<p>ENVIRONMENTAL IMPACT REDUCTION</p>
		 RENEWABLE RESOURCES -77 kg	 UNCUT TREES -0,06	

* Theoretical savings values with the use of recycled paper compared to virgin paper per ton (LCA study - ERGO - Sant'Anna - Pisa).
 ** Theoretical savings values with the use of recycled paper compared to virgin paper per 77 Kg (LCA study - ERGO - Sant'Anna - Pisa).



Sign up to our newsletter
to get updates on our products.
FRAME HERE



LCT
BTO Standard Quality
06/2023