

# BARTOLI

# KRAFTON®



KRAFTON® cardboard, is safety and innovation. It is the result of a thorough research and development process, it offers high values in terms of stiffness and strength guaranteed over time as well as excellent peel strength even in wet conditions due to low absorption properties. The company's new technology, CROSS FIBER TECHNOLOGY (CFT), is able to offer equal mechanical and behavioral performance to the insole.

## DESCRIPTION



IMAGE  
SCALE 1:1

COLOR	PRINT	THICKNESS	MASTER SHEET	STANDARD SIZES
green	white	2,0 - 3,5 mm	3300 x 4800 mm	sheets 1070 x 1570 mm
				sheets 1540 x 1570 mm
				sheets 1540 x 960 mm
				sheets 1540 x 1280 mm

## FEATURES



## CONNOTATIONS

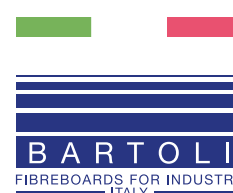


## CERTIFICATIONS

MANUFACTURING PLANT LUCCA - 100% MADE IN ITALY



UNI EN ISO 14001:2015





SHEET SIZE mm	THICKNESS mm	GR/CM <sup>2</sup>	KG/SH *	SH x PL
1070 x 1570	2,0	1,15	3,85	270
1070 x 1570	2,5	1,15	4,83	215
1070 x 1570	2,8	1,15	5,41	195
1070 x 1570	3,0	1,15	5,80	180
1070 x 1570	3,2	1,15	6,18	165
1070 x 1570	3,5	1,15	6,58	155

**TECHNICAL DATA**

\* Theoretical weights

Possibility to offer on demand specific sheet sizes, thicknesses, strips and sheets-roughing. The technical product values are reference values and may be subject to modifications. Each value is subject to minimum tolerances due to the use of recycled raw materials.

**NOTES**

TEST TM11	NAILING RESISTANCE	★ ★ ★ ★ ★
TEST TM80	DELAMINATION	★ ★ ★ ★ ★
TEST TM2	LONGITUDINAL/TRANSVERSAL TRACTION	★ ★ ★ ★ ★
TEST TM BAR01	RIGIDITY	★ ★ ★ ★ ★
TEST TM112	FATIGUE RESISTANCE	★ ★ ★ ★ ★

**MECHANICAL TEST**

TESTED BY





*"Our environmental policy, which began many years ago, has always been oriented toward a scientific approach, never ideological, making use only of well known certifications issued by qualified and internationally accredited institutes, in compliance to the regulations and norms of over 80 countries where Bartoli company operates and private international brand requirements."*

**APPLICATION**



**50% RECYCLED + 50% VIRGIN FIBRES**

**COMPOSITION**



Recycled raw materials are carefully selected and controlled by the qualified supply chains. We use high performances pulp which pass both mechanical and chemical tests.



In cooperation with Intertek laboratories, for the chemical monitoring by constant tests on our raw materials and products in compliance with international regulations. In addition, the most restrictive limits of luxury brands become our benchmark limits.

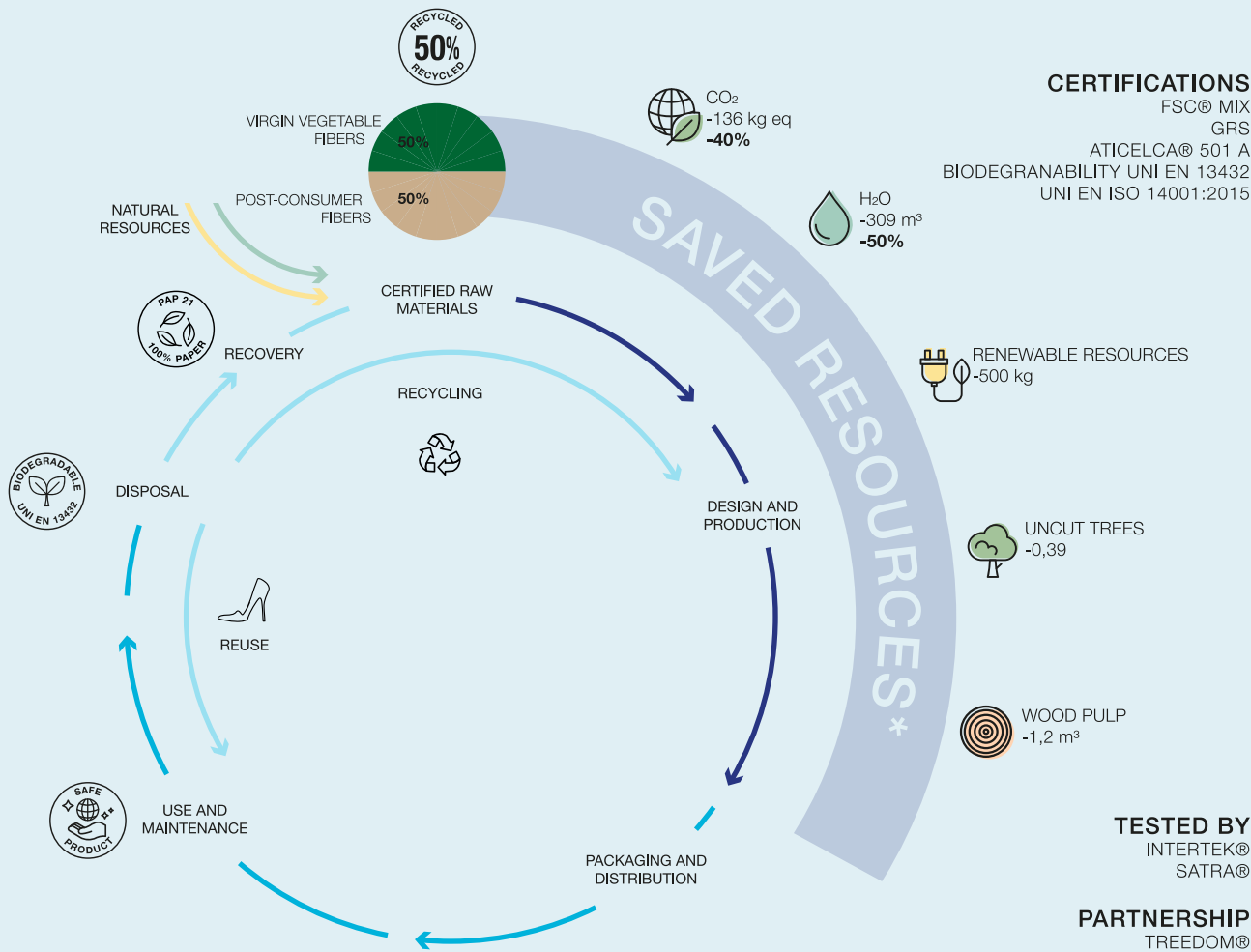


Sign up to our newsletter  
to get updates on our products.  
FRAME HERE



# LIFE CYCLE THINKING

# KRAFTON®



1000 PAIR OF SHOES MADE FROM KRAFTON® 3 mm**		<b>SAVED RESOURCES</b>	CO <sub>2</sub> -10 kg eq	H <sub>2</sub> O -24 m <sup>3</sup>	<b>ENVIRONMENTAL IMPACT REDUCTION</b>
			RENEWABLE RESOURCES -39 kg	UNCUT TREES -0,03	WOOD PULP -0,09 m <sup>3</sup>

\* Theoretical savings values with the use of recycled paper compared to virgin paper per ton (LCA study - ERGO - Sant'Anna - Pisa).  
 \*\* Theoretical savings values with the use of recycled paper compared to virgin paper per 77 Kg (LCA study - ERGO - Sant'Anna - Pisa).



Sign up to our newsletter to get updates on our products. FRAME HERE



LCT  
KRAFTON®  
06/2023